



NK-2R Polyclonal Antibody

Catalog No	YP-Ab-12770
Isotype	IgG
Reactivity	Human;Rat;Mouse;
Applications	WB;IF;ELISA
Gene Name	TACR2
Protein Name	Substance-K receptor
Immunogen	The antiserum was produced against synthesized peptide derived from human NK2R. AA range:301-350
Specificity	NK-2R Polyclonal Antibody detects endogenous levels of NK-2R protein.
Formulation	Liquid in PBS containing 50% glycerol, 0.5% BSA and 0.02% sodium azide.
Source	Polyclonal, Rabbit,IgG
Purification	The antibody was affinity-purified from rabbit antiserum by affinity-chromatography using epitope-specific immunogen.
Dilution	Western Blot: 1/500 - 1/2000. Immunofluorescence: 1/200 - 1/1000. ELISA: 1/5000. Not yet tested in other applications.
Concentration	1 mg/ml
Purity	≥90%
Storage Stability	-20°C/1 year
Synonyms	TACR2; NK2R; NKNAR; TAC2R; Substance-K receptor; SKR; NK-2 receptor; NK-2R; Neurokinin A receptor; Tachykinin receptor 2
Observed Band	48kD
Cell Pathway	Cell membrane; Multi-pass membrane protein.
Tissue Specificity	Bone marrow,Lung,Stomach,Trachea,
Function	function:This is a receptor for the tachykinin neuropeptide substance K (neurokinin A). It is associated with G proteins that activate a phosphatidylinositol-calcium second messenger system.,miscellaneous:The rank order of affinity of this receptor to tachykinins is: substance K > neuromedin-K > substance P.,similarity:Belongs to the G-protein coupled receptor 1 family.,
Background	This gene belongs to a family of genes that function as receptors for tachykinins. Receptor affinities are specified by variations in the 5'-end of the sequence. The receptors belonging to this family are characterized by interactions with G proteins and 7 hydrophobic transmembrane regions. This gene encodes the receptor for the tachykinin neuropeptide substance K, also referred to as neurokinin A. [provided by RefSeq, Jul 2008],



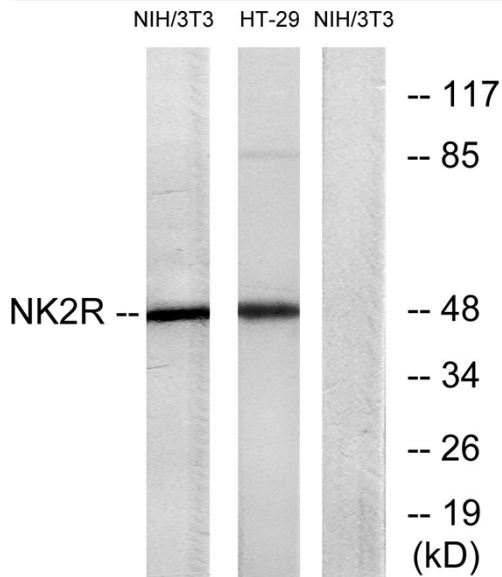
matters needing attention

Avoid repeated freezing and thawing!

Usage suggestions

This product can be used in immunological reaction related experiments. For more information, please consult technical personnel.

Products Images



Western blot analysis of lysates from NIH/3T3 and HT-29 cells, using NK2R Antibody. The lane on the right is blocked with the synthesized peptide.